

GROUND BAR CHAIR G25/40



POSITIVE CLIP-ON



FITS STEEL 6 - 25mm

“What we like about Castle is they are always right there to help and have stock on hand”

– John - Distributor

The design specifics of our **G25/40 Ground Bar Chair**.

This chair is designed with the user and highest construction standards in mind.

The G25/40 is built to withstand high loading features include the handy clip on function so you can clip on to the mesh upside down and give the mesh a shake and all the chairs swing into place.

These chairs are batch tested and meet the AS/NZS 2425:2015 Standards for bar chairs in reinforced concrete.

Perfect For:

Slab on ground applications, Trench bar supports, Driveways, Paths, Patios, Civil precast construction.

PAGE 2
FOR MORE INFO



0800 55 33 00

APPLICATIONS

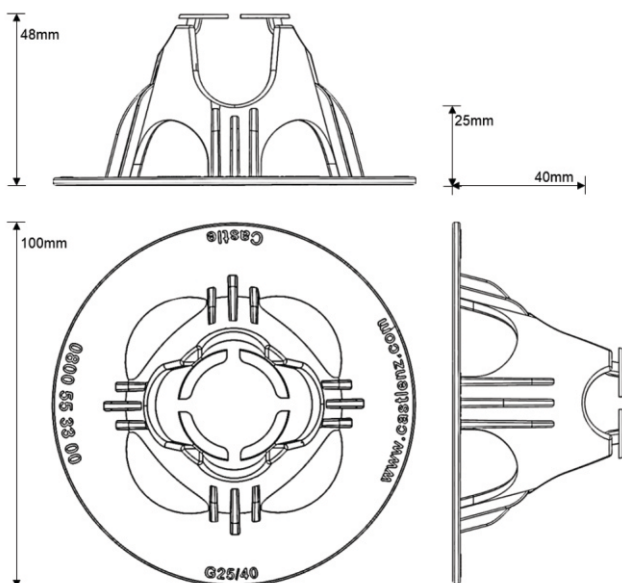
- Slab on Ground, Rib-Raft & Pod.
- Patios, Paths, Driveways
- Trench bar supports
- Civil Precast construction

TECHNICAL CHARACTERISTICS

Code	G25/40
Cover (Bottom Base)	25mm and 40mm
Diameter	100
Colour	Multi - Colour
Bag Quantity	100 units
Bag Weight	1.70kg
Pallet Quantity	9000 units
Pallet Weight	153kg
Pallet Cubic Area (m ³)	1.40m ³
Test Standard	AS/NZS 2425:2015
H2S Resistance	A1 - Excellent*
Material	Polypropylene

*Chemical Effect; Excellent. Satisfactory to 72°F (22°C)

TECHNICAL DIMENSIONS

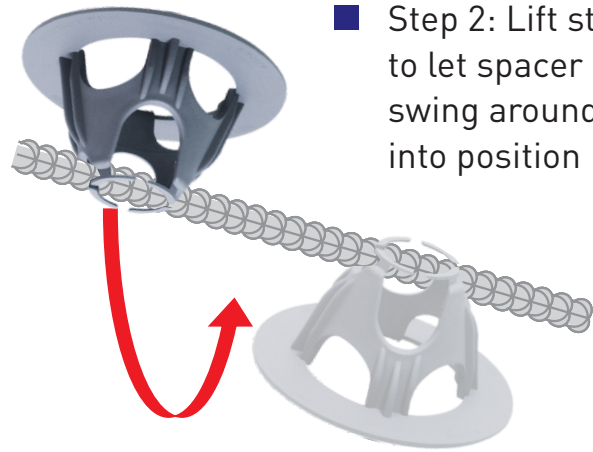


FEATURES AND BENEFITS

- Clip Style top
- Fits mesh/bar sizes 6-25mm
- Heavy duty stable support.
- Wide base for soft surfaces such as poly pods.

EVERYDAY APPLICATION

- Step 1: Clip Spacer to Mesh / Bar
- Step 2: Lift steel to let spacer swing around into position



TEST DATA

